



CAÑIFLEX

desde 1984

CATÁLOGO
REV. MARZO 2025

**INGENIERÍA Y SOLUCIONES
PARA LA CONDUCCIÓN DE FLUIDOS**



ADAPTADORES SERIE 700

En sistemas hidráulicos, un adaptador es un elemento que vincula la conexión entre manguera/tubo y un componente (Bombas, Motores, Manifolds, Cilindros y Etc.). Los adaptadores, en sus diversos tamaños y asientos, permiten uniones herméticas y seguras, evitando fugas y garantizando la correcta transmisión del fluido hidráulico. Nuestra amplia línea 700, está alineada con las Normas Internacionales SAE J514-J516-J518-J1453-ISO 8434-1-2-3.

ISO 9001



GESTIÓN
DE LA CALIDAD
ISO 9001:2015
ORGANIZACIÓN
CAÑIFLEX S.A.
Acreditación: SC 004



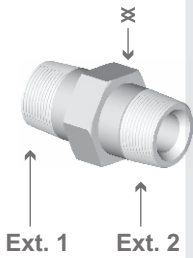
IATF 16949



www.caniflex.com.ar

711

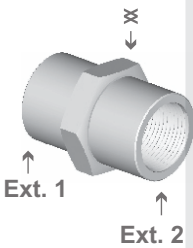
ADAPTADOR R. CÓNICA "NPT" EN AMBOS EXTREMOS



Código Cañiflex	CÓDIGO	Rosca Extremo 1 Cónica NPT Ext.	Rosca Extremo 2 Cónica NPT Ext.
T000206	C 711-2-2	1/8" - 27 H	1/8" - 27 H
T000207	C 711-2-4	1/8" - 27 H	1/4" - 18 H
T000208	C 711-4-4	1/4" - 18 H	1/4" - 18 H
T000209	C 711-4-6	1/4" - 18 H	3/8" - 18 H
T000210	C 711-4-8	1/4" - 18 H	1/2" - 14 H
T000211	C 711-6-6	3/8" - 18 H	3/8" - 18 H
T000212	C 711-6-8	3/8" - 18 H	1/2" - 14 H
T000213	C 711-8-8	1/2" - 14 H	1/2" - 14 H
T000214	C 711-8-12	1/2" - 14 H	3/4" - 14 H
T000215	C 711-12-12	3/4" - 14 H	3/4" - 14 H
T000216	C 711-12-16	3/4" - 14 H	1" - 11 1/2 H
T000217	C 711-16-16	1" - 11 1/2 H	1" - 11 1/2 H
T000218	C 711-16-20	1" - 11 1/2 H	1"1/4 - 11 1/2 H
T000219	C 711-20-20	1"1/4 - 11 1/2 H	1"1/4 - 11 1/2 H
T000220	C 711-20-24	1"1/4 - 11 1/2 H	1"1/2 - 11 1/2 H
T000221	C 711-24-24	1"1/2 - 11 1/2 H	1"1/2 - 11 1/2 H
T000222	C 711-32-32	2" - 11 1/2 H	2" - 11 1/2 H

711

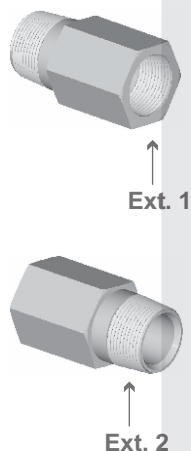
ADAPTADOR R. CÓNICA "NPT" INTERIOR EN AMBOS EXTREMOS



Código Cañiflex	CÓDIGO	Rosca Extremo 1 Cónica NPT Int.	Rosca Extremo 2 Cónica NPT Int.
T000250	C 711-2I-2I	1/8" - 27 H	1/8" - 27 H
T000251	C 711-4I-4I	1/4" - 18 H	1/4" - 18 H
T000252	C 711-4I-8I	1/4" - 18 H	1/2" - 14 H
T000253	C 711-6I-6I	3/8" - 18 H	3/8" - 18 H
T000254	C 711-6I-8I	3/8" - 18 H	1/2" - 14 H
T000255	C 711-8I-8I	1/2" - 14 H	1/2" - 14 H
T000256	C 711-8I-12I	1/2" - 14 H	3/4" - 14 H
T000257	C 711-12I-12I	3/4" - 14 H	3/4" - 14 H
T000258	C 711-16I-16I	1" - 11 1/2 H	1" - 11 1/2 H
T000259	C 711-20I-20I	1"1/4 - 11 1/2 H	1"1/4 - 11 1/2 H
T018676	C 711-24I-24I	1"1/2 - 11 1/2 H	1"1/2 - 11 1/2 H
T021782	C 711-32I-32I	2" - 11 1/2 H	2" - 11 1/2 H

711

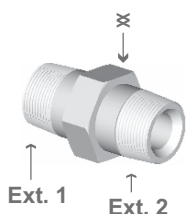
ADAPTADOR R. CÓNICA "NPT" INTERIOR Y R. CÓNICA "NPT" EXTERIOR



Código Cañiflex	CÓDIGO	Rosca Extremo 1 Cónica NPT Int.	Rosca Extremo 2 Cónica NPT Ext.
T021571	C 711-2I-2	1/8" - 27 H	1/8" - 27 H
T000229	C 711-2I-4	1/8" - 27 H	1/4" - 18 H
T000230	C 711-2I-6	1/8" - 27 H	3/8" - 18 H
T030122	C 711-4I-2	1/4" - 18 H	1/8" - 27 H
T000231	C 711-4I-4	1/4" - 18 H	1/4" - 18 H
T000234	C 711-4I-4 CON VÁLVULA	1/4" - 18 H	1/4" - 18 H
T000235	C 711-4I-4 PR Y VÁLVULA	1/4" - 18 H	1/4" - 18 H
T017846	C 711-4I-4 PR 1,00 MM	1/4" - 18 H	1/4" - 18 H
T000232	C 711-4I-4 PR 1,50 MM	1/4" - 18 H	1/4" - 18 H
T000233	C 711-4I-4 PR 2,00 MM	1/4" - 18 H	1/4" - 18 H
T000236	C 711-4I-6	1/4" - 18 H	3/8" - 18 H
T026666	C 711-4I-8	1/4" - 18 H	1/2" - 14 H
T000237	C 711-6I-4	3/8" - 18 H	1/4" - 18 H
T000238	C 711-6I-6	3/8" - 18 H	3/8" - 18 H
T000239	C 711-6I-8	3/8" - 18 H	1/2" - 14 H
T029587	C 711-8I-4	1/2" - 14 H	1/4" - 18 H
T000240	C 711-8I-6	1/2" - 14 H	3/8" - 18 H
T000241	C 711-8I-8	1/2" - 14 H	1/2" - 14 H
T000243	C 711-8I-8 CON VÁLVULA	1/2" - 14 H	1/2" - 14 H
T017970	C 711-8I-8 PR 1,50 MM	1/2" - 14 H	1/2" - 14 H
T000242	C 711-8I-8 PR 2,00 MM	1/2" - 14 H	1/2" - 14 H
T000244	C 711-8I-8 PR Y VÁLVULA	1/2" - 14 H	1/2" - 14 H
T022404	C 711-8I-8 PR 2,50 MM	1/2" - 14 H	1/2" - 14 H
T037770	C 711-8I-8 PR 4,00 MM	1/2" - 14 H	1/2" - 14 H
T000245	C 711-8I-12	1/2" - 14 H	3/4" - 14 H
T000246	C 711-12I-8	3/4" - 14 H	1/2" - 14 H
T000247	C 711-12I-12	3/4" - 14 H	3/4" - 14 H
T026399	C 711-12I-16	3/4" - 14 H	1" - 11 1/2 H
T000248	C 711-16I-12	1" - 11 1/2 H	3/4" - 14 H
T000249	C 711-16I-16	1" - 11 1/2 H	1" - 11 1/2 H
T027765	C 711-24I-20	1"1/2 - 11 1/2 H	1"1/4 - 11 1/2 H

711-B

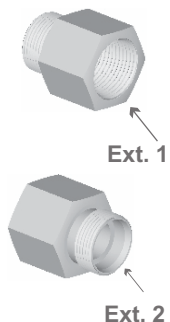
ADAPTADOR R. CÓNICA "BSPT" EN AMBOS EXTREMOS



Código Cañiflex	CÓDIGO	Rosca Extremo 1 Cónica BSPT Ext.	Rosca Extremo 2 Cónica BSPT Ext.
T020313	C 711-2B-2B	1/8" - 28 H	1/8" - 28 H
T023102	C 711-4B-4B	1/4" - 19 H	1/4" - 19 H
T023104	C 711-6B-6B	3/8" - 19 H	3/8" - 19 H
T023106	C 711-8B-8B	1/2" - 14 H	1/2" - 14 H

712

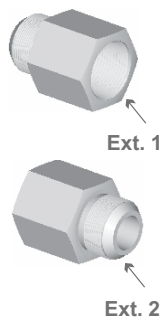
ADAPTADOR R. CÓNICA "NPT" INTERIOR Y ALOJAMIENTO VIROLA R. "UNF"



Código Cañiflex	CÓDIGO	Rosca Extremo 1 NPT Int.	P/ Tubo Diám. Ext.	Rosca Extremo 2 UNF Ext.
T000260	C 712-4i-4	1/4" - 29 H	3/8"	9/16" - 18 H
T000261	C 712-4i-6	1/4" - 19 H	3/8"	9/16" - 18 H
T000262	C 712-6i-4	3/8" - 19 H	1/2"	3/4" - 16 H
T000263	C 712-6i-6	3/8" - 19 H	1/2"	3/4" - 16 H
T000264	C 712-6i-8	3/8" - 19 H	1/2"	3/4" - 16 H
T000265	C 712-8i-6	1/2" - 14 H	5/8"	7/8" - 14 H
T000266	C 712-8i-8	1/2" - 14 H	5/8"	7/8" - 14 H
T000267	C 712-8i-10	1/2" - 14 H	5/8"	7/8" - 14 H

714

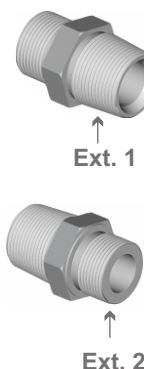
ADAPTADOR R. CÓNICA "NPT" INTERIOR Y ASIENTO JIC 37° R. "UNF"



Código Cañiflex	CÓDIGO	Rosca Extremo 1 Cónica NPT Int.	Rosca Extremo 2 UNF Ext.
T030144	C 714-4i-2	1/4" - 19 H	7/16" - 20 H
T035535	C 714-4i-3	1/4" - 19 H	1/2" - 20 H
T000268	C 714-4i-4	1/4" - 19 H	9/16" - 18 H
T000269	C 714-4i-6	1/4" - 19 H	3/4" - 16 H
T000270	C 714-6i-4	3/8" - 19 H	9/16" - 18 H
T000271	C 714-6i-6	3/8" - 19 H	3/4" - 16 H
T000272	C 714-6i-8	3/8" - 19 H	7/8" - 14 H
T000273	C 714-8i-6	1/2" - 14 H	3/4" - 16 H
T000274	C 714-8i-8	1/2" - 14 H	7/8" - 14 H
T000275	C 714-8i-10	1/2" - 14 H	1"1/16 - 12 H

718

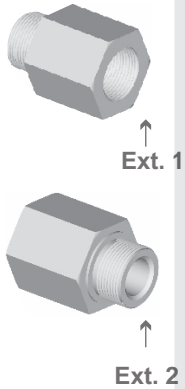
ADAPTADOR R. CÓNICA "NPT" Y ASIENTO AROSELLO R. "UNF"



Código Cañiflex	CÓDIGO	Rosca Extremo 1 Cónica NPT Ext.	Rosca Extremo 2 UNF Ext.
T000594	C 718-4-4	1/4" - 19 H	9/16" - 18 H
T000595	C 718-6-6	3/8" - 19 H	3/4" - 16 H
T000597	C 718-6-8	3/8" - 19 H	7/8" - 14 H
T000596	C 718-8-6	1/2" - 14 H	3/4" - 16 H
T000598	C 718-8-8	1/2" - 14 H	7/8" - 14 H
T023837	C 718-8-10	1/2" - 14 H	1"1/16 - 12 H
T026866	C 718-12-6	3/4" - 14 H	3/4" - 16 H
T019833	C 718-12-8	3/4" - 14 H	7/8" - 18 H
T023669	C 718-12-10	3/4" - 14 H	1"1/16 - 12 H
T028487	C 718-12-12	3/4" - 14 H	1"3/16 - 12 H
T023885	C 718-16-10	1" - 11 1/2 H	1"1/16 - 12 H
T033012	C 718-16-14	1" - 11 1/2 H	1"5/16 - 12 H
T023009	C 718-20-24	1"1/4 - 11 1/2 H	2"1/2 - 12 H

718

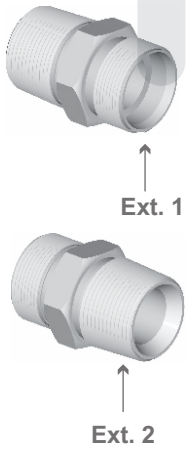
ADAPTADOR R. CÓNICA "NPT" INTERNA Y ASIENTO AROSELLO R. "UNF"



Código Cañiflex	CÓDIGO	Rosca Extremo 1 Cónica NPT Int.	Rosca Extremo 2 UNF Ext.
T000283	C 718-2I-6	1/8" - 27 H	3/4" - 16 H
T037855	C 718-4I-2	1/4" - 19 H	7/16" - 20 H
T019417	C 718-4I-4	1/4" - 19 H	9/16" - 18 H
T000284	C 718-4I-6	1/4" - 19 H	3/4" - 16 H
T000285	C 718-4I-8	1/4" - 19 H	7/8" - 14 H
T000286	C 718-4I-10	1/4" - 19 H	1"1/16" - 12 H
T020303	C 718-6I-6	3/8" - 19 H	3/4" - 16 H
T000287	C 718-6I-8	3/8" - 19 H	7/8" - 14 H
T000288	C 718-6I-10	3/8" - 19 H	1"1/16" - 12 H
T000592	C 718-8I-6	1/2" - 14 H	3/4" - 16 H
T016584	C 718-8I-8	1/2" - 14 H	7/8" - 18 H
T000289	C 718-8I-10	1/2" - 14 H	1"1/16" - 12 H
T000290	C 718-8I-12	1/2" - 14 H	1"3/16" - 12 H
T000291	C 718-8I-14	1/2" - 14 H	1"5/16" - 12 H
T019158	C 718-12I-8	3/4" - 14 H	7/8" - 18 H
T019159	C 718-12I-10	3/4" - 14 H	1"1/16" - 12 H
T020761	C 718-12I-12	3/4" - 14 H	1"3/16" - 12 H
T000292	C 718-12I-14	3/4" - 14 H	1"5/16" - 12 H
T000293	C 718-12I-16	3/4" - 14 H	1"5/8" - 12 H
T019436	C 718-16I-10	1" - 11 1/2 H	1"1/16" - 12 H
T019385	C 718-16I-14	1" - 11 1/2 H	1"5/16" - 12 H
T000294	C 718-16I-20	1" - 11 1/2 H	1"7/8" - 12 H
T000295	C 718-16I-24	1" - 11 1/2 H	2"1/2" - 12 H

721

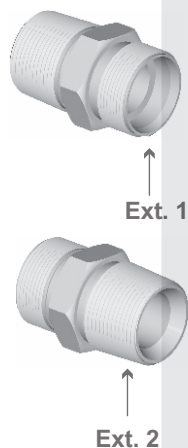
ADAPTADOR ALOJAMIENTO VIOLA R. "UNF" Y R. CÓNICA "NPT"



Código Cañiflex	CÓDIGO	Rosca Extremo 1 UNF Ext.	P/ Tubo Diám. Ext.	Rosca Extremo 2 Cónica NPT Ext.
T000296	C 721-1-2	3/8" - 24 H	3/16"	1/8" - 27 H
T000299	C 721-1-4	3/8" - 24 H	3/16"	1/4" - 19 H
T000297	C 721-2-2	7/16" - 20 H	1/4"	1/8" - 27 H
T000300	C 721-2-4	7/16" - 20 H	1/4"	1/4" - 19 H
T000301	C 721-3-4	1/2" - 20 H	5/16"	1/4" - 19 H
T000298	C 721-4-2	9/16" - 18 H	3/8"	1/8" - 27 H
T000302	C 721-4-4	9/16" - 18 H	3/8"	1/4" - 19 H
T000305	C 721-4-6	9/16" - 18 H	3/8"	3/8" - 19 H
T000309	C 721-4-8	9/16" - 18 H	3/8"	1/2" - 14 H
T000303	C 721-6-4	3/4" - 16 H	1/2"	1/4" - 19 H
T000306	C 721-6-6	3/4" - 16 H	1/2"	3/8" - 19 H
T000310	C 721-6-8	3/4" - 16 H	1/2"	1/2" - 14 H
T000314	C 721-8-12	7/8" - 14 H	5/8"	3/4" - 14 H
T000304	C 721-8-4	7/8" - 14 H	5/8"	1/4" - 19 H
T000307	C 721-8-6	7/8" - 14 H	5/8"	3/8" - 19 H
T000311	C 721-8-8	7/8" - 14 H	5/8"	1/2" - 14 H
T000308	C 721-10-6	1"1/16" - 12 H	3/4"	3/8" - 19 H
T000312	C 721-10-8	1"1/16" - 12 H	3/4"	1/2" - 14 H
T000315	C 721-10-12	1"1/16" - 12 H	3/4"	3/4" - 14 H
T000319	C 721-10-16	1"1/16" - 12 H	3/4"	1" - 11 1/2 H

721

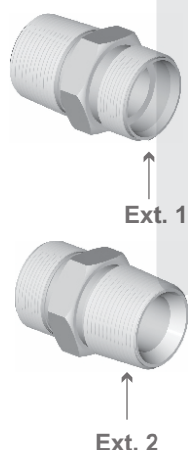
ADAPTADOR ALOJAMIENTO VIOLA R. "UNF" Y R. CÓNICA "NPT"



Código Cañiflex	CÓDIGO	Rosca Extremo 1 UNF Ext.	P/ Tubo Diám. Ext.	Rosca Extremo 2 Cónica NPT Ext.
T000313	C 721-12-8	1"3/16 - 12 H	7/8"	1/2" - 14 H
T000316	C 721-12-12	1"3/16 - 12 H	7/8"	3/4" - 14 H
T000320	C 721-12-16	1"3/16 - 12 H	7/8"	1" - 11 1/2 H
T018248	C 721-14-8	1"5/16 - 12 H	1"	1/2" - 14 H
T000317	C 721-14-12	1"5/16 - 12 H	1"	3/4" - 14 H
T000321	C 721-14-16	1"5/16 - 12 H	1"	1" - 11 1/2 H
T038924	C 721-14-20	1"5/16 - 12 H	1"	1"1/4 - 11 1/2 H
T000318	C 721-16-12	1"5/8 - 12 H	1"1/4	3/4" - 14 H
T000322	C 721-16-16	1"5/8 - 12 H	1"1/4	1" - 11 1/2 H
T000324	C 721-16-20	1"5/8 - 12 H	1"1/4	1"1/4 - 11 1/2 H
T000323	C 721-20-16	1"7/8 - 12 H	1"1/2	1" - 11 1/2 H
T000325	C 721-20-20	1"7/8 - 12 H	1"1/2	1"1/4 - 11 1/2 H
T000327	C 721-20-24	1"7/8 - 12 H	1"1/2	1"1/2 - 11 1/2 H
T000326	C 721-24-20	2"1/2 - 12 H	2"	1"1/4 - 11 1/2 H
T000328	C 721-24-24	2"1/2 - 12 H	2"	1"1/2 - 11 1/2 H
T035536	C 721-24-32	2"1/2 - 12 H	2"	2" - 11 1/2 H

721-M

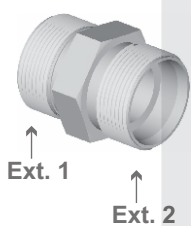
ADAPTADOR ALOJAMIENTO VIOLA R. "MÉTRICA" Y R. CÓNICA "NPT"



Código Cañiflex	CÓDIGO	Rosca Extremo 1 Métrica Ext.	P/ Tubo Diám. Ext.	Rosca Extremo 2 Cónica NPT Ext.
T020572	C 721-M10-4	10 X 1,5 MM	T4	1/4" - 19 H
T055129	C 721-M12-2	12 X 1,5 MM	T6	1/8" - 27 H
T020577	C 721-M12-4	12 X 1,5 MM	T6	1/4" - 19 H
T018253	C 721-M14-4	14 X 1,5 MM	T8	1/4" - 19 H
T023070	C 721-M14-6	14 X 1,5 MM	T8	3/8" - 19 H
T022949	C 721-M16-4	16 X 1,5 MM	T10	1/4" - 19 H
T020573	C 721-M16-6	16 X 1,5 MM	T10	3/8" - 19 H
T035989	C 721-M16-8	16 X 1,5 MM	T10	1/2" - 14 H
T020574	C 721-M18-6	18 X 1,5 MM	T12	3/8" - 19 H
T020727	C 721-M20-4	20 X 1,5 MM	T12	1/4" - 19 H
T023074	C 721-M20-6	20 X 1,5 MM	T12	3/8" - 19 H
T054740	C 721-M20-8	20 X 1,5 MM	T12	1/2" - 14 H
T023073	C 721-M22-6	22 X 1,5 MM	T15	3/8" - 19 H
T021078	C 721-M22-8	22 X 1,5 MM	T15	1/2" - 14 H
T023071	C 721-M24-6	24 X 1,5 MM	T16	3/8" - 19 H
T023093	C 721-M24-8	24 X 1,5 MM	T16	1/2" - 14 H
T023095	C 721-M28-12	28 X 1,5 MM	T20	3/4" - 14 H
T023096	C 721-M30-12	30 X 1,5 MM	T22	3/4" - 14 H
T023097	C 721-M30-12	30 X 2,0 MM	T22	3/4" - 14 H

722

ADAPTADOR ALOJAMIENTO VIOLA R. "UNF" EN AMBOS EXTREMOS



Código Cañiflex	CÓDIGO	Rosca Extremo 1 UNF Ext.	P/ Tubo Diám. Ext.	Rosca Extremo 2 UNF Ext.
T000329	C 722-1-1	3/8" - 24 H	3/16"	3/8" - 24 H
T000330	C 722-2-2	7/16" - 20 H	1/4"	7/16" - 20 H
T000331	C 722-3-3	1/2" - 20 H	5/16"	1/2" - 20 H
T000332	C 722-4-4	9/16" - 18 H	3/8"	9/16" - 18 H
T000333	C 722-4-6	9/16" - 18 H	3/8"	3/4" - 16 H
T000334	C 722-6-6	3/4" - 16 H	1/2"	3/4" - 16 H
T000335	C 722-6-8	3/4" - 16 H	1/2"	7/8" - 14 H
T000336	C 722-8-8	7/8" - 14 H	5/8"	7/8" - 14 H
T000337	C 722-10-10	1"1/16 - 12 H	3/4"	1"1/16 - 12 H
T000593	C 722-12-12	1"3/16 - 12 H	7/8"	1"3/16 - 12 H
T000338	C 722-14-14	1"5/16 - 12 H	1"	1"5/16 - 12 H
T018246	C 722-14-16	1"5/16 - 12 H	1"	1"5/8 - 12 H
T000339	C 722-16-16	1"5/8 - 12 H	1"1/4	1"5/8 - 12 H
T000340	C 722-20-20	1"7/8 - 12 H	1"1/2	1"7/8 - 12 H

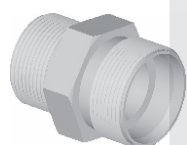
P-722

ADAPTADOR PASACHAPA ALOJAMIENTO VIOLA R. "UNF" EN AMBOS EXTREMOS

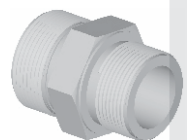
Código Cañiflex	CÓDIGO	Rosca Extremo 1 UNF Ext.	P/ Tubo Diám. Ext.	Rosca Extremo 2 UNF Ext.
T000341	C P 722-1-1	3/8" - 24 H	3/16"	3/8" - 24 H
T000342	C P 722-2-2	7/16" - 20 H	1/4"	7/16" - 20 H
T000343	C P 722-3-3	1/2" - 20 H	5/16"	1/2" - 20 H
T000344	C P 722-4-4	9/16" - 18 H	3/8"	9/16" - 18 H
T000345	C P 722-4-6	9/16" - 18 H	3/8"	3/4" - 16 H
T000346	C P 722-6-6	3/4" - 16 H	1/2"	3/4" - 16 H
T000347	C P 722-6-8	3/4" - 16 H	1/2"	7/8" - 14 H
T000348	C P 722-8-8	7/8" - 14 H	5/8"	7/8" - 14 H
T000349	C P 722-10-10	1"1/16 - 12 H	3/4"	1"1/16 - 12 H
T000350	C P 722-12-12	1"3/16 - 12 H	7/8"	1"3/16 - 12 H
T000351	C P 722-14-14	1"5/16 - 12 H	1"	1"5/16 - 12 H
T000352	C P 722-16-16	1"5/8 - 12 H	1"1/4	1"5/8 - 12 H
T000353	C P 722-20-20	1"7/8 - 12 H	1"1/2	1"7/8 - 12 H

728

ADAPTADOR ALOJAMIENTO VIOLA R. "UNF" Y ASIENTO AROSELLO R. "UNF"



↑
Ext. 1

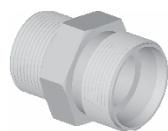


↑
Ext. 2

Código Cañiflex	CÓDIGO	Rosca Extremo 1 UNF Ext.	P/ Tubo Diám. Ext.	Rosca Extremo 2 UNF Ext.
T000354	C 728-2-2	7/16" - 20 H	1/4"	7/16" - 20 H
T000356	C 728-2-4	7/16" - 20 H	1/4"	9/16" - 18 H
T000357	C 728-3-4	1/2" - 20 H	5/16"	9/16" - 18 H
T000355	C 728-4-2	9/16" - 18 H	3/8"	7/16" - 20 H
T000358	C 728-4-4	9/16" - 18 H	3/8"	9/16" - 18 H
T000361	C 728-4-6	9/16" - 18 H	3/8"	3/4" - 16 H
T000365	C 728-4-8	9/16" - 18 H	3/8"	7/8" - 14 H
T000359	C 728-6-4	3/4" - 16 H	1/2"	9/16" - 18 H
T000362	C 728-6-6	3/4" - 16 H	1/2"	3/4" - 16 H
T000366	C 728-6-8	3/4" - 16 H	1/2"	7/8" - 14 H
T000360	C 728-8-4	7/8" - 14 H	5/8"	9/16" - 18 H
T000363	C 728-8-6	7/8" - 14 H	5/8"	3/4" - 16 H
T000367	C 728-8-8	7/8" - 14 H	5/8"	7/8" - 14 H
T000370	C 728-8-10	7/8" - 14 H	5/8"	1"1/16 - 12 H
T000374	C 728-8-12	7/8" - 14 H	5/8"	1"3/16 - 12 H
T000364	C 728-10-6	1"1/16 - 12 H	3/4"	3/4" - 16 H
T000368	C 728-10-8	1"1/16 - 12 H	3/4"	7/8" - 14 H
T000371	C 728-10-10	1"1/16 - 12 H	3/4"	1"1/16 - 12 H
T000375	C 728-10-12	1"1/16 - 12 H	3/4"	1"3/16 - 12 H
T017949	C 728-10-14	1"1/16 - 12 H	3/4"	1"5/16 - 12 H
T000369	C 728-12-8	1"3/16 - 12 H	7/8"	7/8" - 14 H
T000372	C 728-12-10	1"3/16 - 12 H	7/8"	1"1/16 - 12 H
T000376	C 728-12-12	1"3/16 - 12 H	7/8"	1"3/16 - 12 H
T000378	C 728-12-14	1"3/16 - 12 H	7/8"	1"5/16 - 12 H
T000373	C 728-14-10	1"5/16 - 12 H	1"	1"1/16 - 12 H
T000377	C 728-14-12	1"5/16 - 12 H	1"	1"3/16 - 12 H
T000379	C 728-14-14	1"5/16 - 12 H	1"	1"5/16 - 12 H
T000380	C 728-16-14	1"5/8 - 12 H	1"1/4"	1"5/16 - 12 H

728-M

ADAPTADOR ALOJAMIENTO VIOLA R. "MÉTRICA" Y ASIENTO AROSELLO R. "UNF"



Ext. 1



Ext. 2

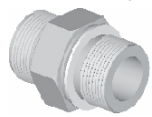
Código Cañiflex	CÓDIGO	Rosca Extremo 1 Métrica Ext.	P/ Tubo Diám. Ext.	Rosca Extremo 2 UNF Ext.
T000381	C 728-M14-4	14 X 1,5 MM	T8	9/16" - 18 H
T000382	C 728-M16-4	14 X 1,5 MM	T8	9/16" - 18 H
T000383	C 728-M16-6	16 X 1,5 MM	T10	3/4" - 16 H
T000387	C 728-M16-8	16 X 1,5 MM	T10	7/8" - 14 H
T035985	C 728-M16-10	16 X 1,5 MM	T10	1"1/16" - 12 H
T035986	C 728-M16-10 PR 1,75 MM	16 X 1,5 MM	T10	1"1/16" - 12 H
T000384	C 728-M18-6	18 X 1,5 MM	T12	3/4" - 16 H
T000388	C 728-M18-8	18 X 1,5 MM	T12	7/8" - 14 H
T055402	C 728-M20-4	20 X 1,5 MM	T12	9/16" - 18 H
T058167	C 728-M20-6	20 X 1,5 MM	T12	3/4" - 16 H
T000389	C 728-M20-8	20 X 1,5 MM	T12	7/8" - 14 H
T000386	C 728-M22-6	22 X 1,5 MM	T15	3/4" - 16 H
T000390	C 728-M22-8	22 X 1,5 MM	T15	7/8" - 14 H
T027653	C 728-M24-6	24 X 1,5 MM	T16	3/4" - 16 H
T024774	C 728-M24-8	24 X 1,5 MM	T16	7/8" - 14 H
T035987	C 728-M24-10	24 X 1,5 MM	T16	1"1/16" - 12 H
T035988	C 728-M30-10	30 X 2,0 MM	T22	1"1/16" - 12 H

729-M

ADAPTADOR ALOJAMIENTO VIOLA R. "UNF" Y ASIENTO ARANDELA R. "MÉTRICA"



Ext. 1

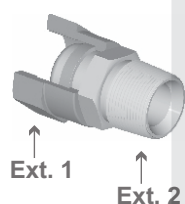


Ext. 2

Código Cañiflex	CÓDIGO	Rosca Extremo 1 UNF Ext.	P/ Tubo Diám. Ext.	Rosca Extremo 2 Métrica Ext.
T000391	C 729-4-M14	9/16" - 18 H	3/8"	14 X 1,5 MM
T000392	C 729-4-M16	9/16" - 18 H	3/8"	16 X 1,5 MM
T000393	C 729-6-M16	3/4" - 16 H	1/2"	16 X 1,5 MM
T000394	C 729-6-M18	3/4" - 16 H	1/2"	18 X 1,5 MM
T000395	C 729-6-M20	3/4" - 16 H	1/2"	20 X 1,5 MM
T000396	C 729-6-M22	3/4" - 16 H	1/2"	22 X 1,5 MM
T000397	C 729-8-M16	7/8" - 14 H	5/8"	16 X 1,5 MM
T000398	C 729-8-M18	7/8" - 14 H	5/8"	18 X 1,5 MM
T000399	C 729-8-M20	7/8" - 14 H	5/8"	20 X 1,5 MM
T000400	C 729-8-M22	7/8" - 14 H	5/8"	22 X 1,5 MM

731

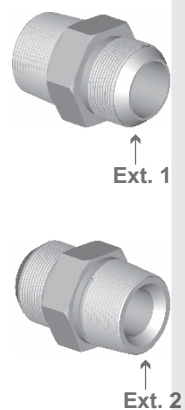
ADAPTADOR H. GIRATORIA ALOJAMIENTO VIOLA R. "UNF" Y R. CÓNICA "NPT"



Código Cañiflex	CÓDIGO	Rosca Extremo 1 UNF Int.	P/ Tubo Diám. Ext.	Rosca Extremo 2 Cónica NPT Ext.
T000401	C 731-4-4	9/16" - 18 H	3/8"	1/4" - 18 H
T000403	C 731-4-6	9/16" - 18 H	3/8"	3/8" - 18 H
T000402	C 731-6-4	3/4" - 16 H	1/2"	1/4" - 18 H
T000404	C 731-6-6	3/4" - 16 H	1/2"	3/8" - 18 H
T000406	C 731-6-8	3/4" - 16 H	1/2"	1/2" - 14 H
T000405	C 731-8-6	7/8" - 14 H	5/8"	3/8" - 18 H
T000407	C 731-8-8	7/8" - 14 H	5/8"	1/2" - 14 H
T000408	C 731-10-8	1"1/16 - 12 H	3/4"	1/2" - 14 H
T000409	C 731-10-12	1"1/16 - 12 H	3/4"	3/4" - 14 H
T029110	C 731-12-8	1"3/16 - 12 H	7/8"	1/2" - 14 H
T000410	C 731-12-12	1"3/16 - 12 H	7/8"	3/4" - 14 H
T025400	C 731-14-16	1"5/16 - 12 H	1"	1" - 11 1/2 H

741-B

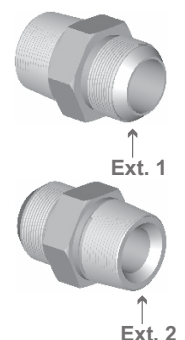
ADAPTADOR ASIENTO JIC 37° R. "UNF" Y R. CÓNICA "BSPT"



Código Cañiflex	CÓDIGO	Rosca Extremo 1 UNF Ext.	Rosca Extremo 2 BSPT Ext.
T024837	C 741-4-B4	9/16" - 18 H	1/4" - 19 H
T029415	C 741-4-B8	9/16" - 18 H	1/2" - 14 H
T032641	C 741-6-B6	3/4" - 16 H	3/8" - 19 H
T032642	C 741-6-B8	3/4" - 16 H	1/2" - 14 H
T030833	C 741-10-B8	1"1/16 - 12 H	1/2" - 14 H
T037689	C 741-10-B12	1"1/16 - 12 H	3/4" - 14 H
T038856	C 741-10-B16	1"1/16 - 12 H	1" - 11 H
T032643	C 741-12-B8	1"3/16 - 12 H	1/2" - 14 H
T030826	C 741-12-B12	1"3/16 - 12 H	3/4" - 14 H
T029762	C 741-12-B16	1"3/16 - 12 H	1" - 11 H
T030990	C 741-14-B12	1"5/16 - 12 H	3/4" - 14 H
T030124	C 741-14-B16	1"5/16 - 12 H	1" - 11 H
T029761	C 741-14-B20	1"5/16 - 12 H	1"1/4 - 11 H
T030566	C 741-20-B20	1"7/8 - 12 H	1"1/4 - 11 H
T043871	C 741-24-B32	2"1/2 - 12 H	2" - 11 H

741-B

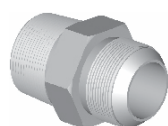
ADAPTADOR ASIENTO JIC 37° R. "BSP" Y R. CÓNICA "NPT"



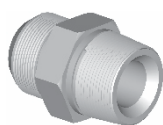
Código Cañiflex	CÓDIGO	Rosca Extremo 1 BPT Ext.	Rosca Extremo 2 NPT Ext.
T026435	C 741-6B-4	3/8" - 19 H	1/4" - 18 H
T021536	C 741-6B-6	3/8" - 19 H	3/8" - 18 H

741

ADAPTADOR ASIENTO JIC 37° R. "UNF" Y R. CÓNICA "NPT"



Ext. 1



Ext. 2

Código Cañiflex	CÓDIGO	Rosca Extremo 1 UNF Ext.	Rosca Extremo 2 Cónica NPT Ext.
T000411	C 741-1-2	3/8" - 24 H	1/8" - 27 H
T000412	C 741-2-2	7/16" - 20 H	1/8" - 27 H
T000415	C 741-2-4	7/16" - 20 H	1/4" - 18 H
T021727	C 741-2-6	7/16" - 20 H	3/8" - 18 H
T000413	C 741-3-2	1/2" - 20 H	1/8" - 27 H
T000416	C 741-3-4	1/2" - 20 H	1/4" - 18 H
T019451	C 741-3-8	1/2" - 20 H	3/8" - 18 H
T000414	C 741-4-2	9/16" - 18 H	1/8" - 27 H
T000417	C 741-4-4	9/16" - 18 H	1/4" - 18 H
T025060	C 741-4-4 PR 1,25 MM	9/16" - 18 H	1/4" - 18 H
T028520	C 741-4-4 PR 2,75 MM	9/16" - 18 H	1/4" - 18 H
T000420	C 741-4-6	9/16" - 18 H	3/8" - 18 H
T000424	C 741-4-8	9/16" - 18 H	1/2" - 14 H
T021726	C 741-5-4	11/16" - 16 H	1/4" - 18 H
T000418	C 741-6-4	3/4" - 16 H	1/4" - 18 H
T024223	C 741-6-4 PR 1,25 MM	3/4" - 16 H	1/4" - 18 H
T039880	C 741-6-4 PR 1,50 MM	3/4" - 16 H	1/4" - 18 H
T000421	C 741-6-6	3/4" - 16 H	3/8" - 18 H
T000425	C 741-6-8	3/4" - 16 H	1/2" - 14 H
T000419	C 741-8-4	7/8" - 14 H	1/4" - 18 H
T000422	C 741-8-6	7/8" - 14 H	3/8" - 18 H
T000426	C 741-8-8	7/8" - 14 H	1/2" - 14 H
T000429	C 741-8-12	7/8" - 14 H	3/4" - 14 H
T023615	C 741-8-16	7/8" - 14 H	1" - 11 1/2 H
T000423	C 741-10-6	1"1/16 - 12 H	3/8" - 18 H
T000427	C 741-10-8	1"1/16 - 12 H	1/2" - 14 H
T000430	C 741-10-12	1"1/16 - 12 H	3/4" - 14 H
T000433	C 741-10-16	1"1/16 - 12 H	1" - 11 1/2 H
T000428	C 741-12-8	1"3/16 - 12 H	1/2" - 14 H
T000431	C 741-12-12	1"3/16 - 12 H	3/4" - 14 H
T000434	C 741-12-16	1"3/16 - 12 H	1" - 11 1/2 H
T000432	C 741-14-12	1"5/16 - 12 H	3/4" - 14 H
T000435	C 741-14-16	1"5/16 - 12 H	1" - 11 1/2 H
T019263	C 741-14-20	1"5/16 - 12 H	1"1/4 - 11 1/2 H
T021021	C 741-16-8	1"5/8 - 12 H	1/2" - 14 H
T017811	C 741-16-12	1"5/8 - 12 H	3/4" - 14 H
T000436	C 741-16-16	1"5/8 - 12 H	1" - 11 1/2 H
T000437	C 741-16-20	1"5/8 - 12 H	1"1/4 - 11 1/2 H
T000439	C 741-16-24	1"5/8 - 12 H	1"1/2 - 11 1/2 H
T000438	C 741-20-20	1"7/8 - 12 H	1"1/4 - 11 1/2 H
T000440	C 741-20-24	1"7/8 - 12 H	1"1/2 - 11 1/2 H
T000441	C 741-24-32	2"1/2 - 12 H	2" - 11 1/2 H

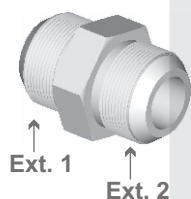
741-P

ADAPTADOR PASACHAPA ASIENTO JIC 37° R. "UNF" Y R. CÓNICA "NPT"

Código Cañiflex	CÓDIGO	Rosca Extremo 1 UNF Ext.	Rosca Extremo 2 Cónica NPT Ext.
T028521	C P 741-4-6	9/16" - 18 H	3/8" - 18 H
T026115	C P 741-6-4	3/4" - 16 H	1/4" - 18 H
T029793	C P 741-6-6	3/4" - 16 H	3/8" - 18 H
T026501	C P 741-8-8	7/8" - 14 H	1/2" - 14 H
T036361	C P 741-10-8	1"1/16 - 12 H	1/2" - 14 H
T029155	C P 741-10-12	1"1/16 - 12 H	3/4" - 14 H
T033245	C P 741-12-12	1"3/16 - 12 H	3/4" - 14 H

744

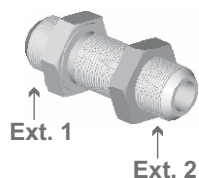
ADAPTADOR ASIENTO JIC 37° R. "UNF" EN AMBOS EXTREMOS



Código Cañiflex	CÓDIGO	Rosca Extremo 1 UNF Ext.	Rosca Extremo 2 UNF Ext.
T000442	C 744-2-2	7/16" - 20 H	7/16" - 20 H
T020311	C 744-2-4	7/16" - 20 H	9/16" - 18 H
T000443	C 744-3-3	1/2" - 20 H	1/2" - 20 H
T000444	C 744-4-4	9/16" - 18 H	9/16" - 18 H
T028982	C 744-4-6	9/16" - 18 H	3/4" - 16 H
T000445	C 744-6-6	3/4" - 16 H	3/4" - 16 H
T000446	C 744-8-8	7/8" - 14 H	7/8" - 14 H
T000447	C 744-10-10	1"1/16 - 12 H	1"1/16 - 12 H
T029007	C 744-10-12	1"1/16 - 12 H	1"3/16 - 12 H
T000448	C 744-12-12	1"3/16 - 12 H	1"3/16 - 12 H
T000449	C 744-14-14	1"5/16 - 12 H	1"5/16 - 12 H
T038314	C 744-14-16	1"5/16 - 12 H	1"5/8 - 12 H
T019030	C 744-16-16	1"5/8 - 12 H	1"5/8 - 12 H
T021752	C 744-20-20	1"7/8 - 12 H	1"7/8 - 12 H
T038520	C 744-24-24	2"1/2 - 12 H	2"1/2 - 12 H

P 744

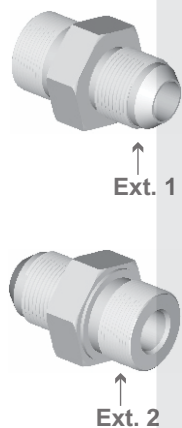
ADAPTADOR PASACHAPA ASIENTO JIC 37° R. "UNF" EN AMBOS EXTREMOS



Código Cañiflex	CÓDIGO	Rosca Extremo 1 UNF Ext.	Rosca Extremo 2 UNF Ext.
T025419	C P 744-2-2	7/16" - 20 H	7/16" - 20 H
T018873	C P 744-2-4	7/16" - 20 H	9/16" - 18 H
T019032	C P 744-3-3	1/2" - 20 H	1/2" - 20 H
T000451	C P 744-4-4	9/16" - 18 H	9/16" - 18 H
T000452	C P 744-4-6	9/16" - 18 H	3/4" - 16 H
T000453	C P 744-6-6	3/4" - 16 H	3/4" - 16 H
T000454	C P 744-8-8	7/8" - 14 H	7/8" - 14 H
T000455	C P 744-10-10	1"1/16 - 12 H	1"1/16 - 12 H
T016627	C P 744-10-12	1"1/16 - 12 H	1"3/16 - 12 H

748

ADAPTADOR ASIENTO JIC 37° R. "UNF" Y ASIENTO AROSELLO R. "UNF"

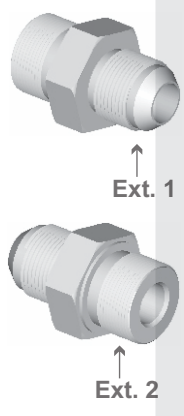


Código Cañiflex	CÓDIGO	Rosca Extremo 1 UNF Ext.	Rosca Extremo 2 UNF Ext.
T000456	C 748-2-2	7/16" - 20 H	7/16" - 20 H
T000458	C 748-2-4	7/16" - 20 H	9/16" - 20 H
T019434	C 748-3-3	1/2" - 20 H	1/2" - 20 H
T000459	C 748-3-4	1/2" - 20 H	9/16" - 20 H
T036499	C 748-4-1	9/16" - 18 H	3/8" - 24 H
T000457	C 748-4-2	9/16" - 18 H	7/16" - 18 H
T020567	C 748-4-3	9/16" - 18 H	1/2" - 20 H
T000460	C 748-4-4	9/16" - 18 H	9/16" - 18 H
T026154	C 748-4-4 PR 0,70 MM	9/16" - 18 H	9/16" - 18 H
T039002	C 748-4-4 PR 1,00 MM	9/16" - 18 H	9/16" - 18 H
T000463	C 748-4-6	9/16" - 18 H	3/4" - 16 H
T000467	C 748-4-8	9/16" - 18 H	7/8" - 14 H
T029620	C 748-4-8 PR 2,00 MM	9/16" - 18 H	7/8" - 14 H
T022941	C 748-4-10	9/16" - 18 H	1"1/16 - 12 H
T039035	C 748-6-2	3/4" - 16 H	7/16" - 20 H
T000461	C 748-6-4	3/4" - 16 H	9/16" - 18 H
T000464	C 748-6-6	3/4" - 16 H	3/4" - 16 H
T000468	C 748-6-8	3/4" - 16 H	7/8" - 14 H
T016573	C 748-6-10	3/4" - 16 H	1"1/16 - 12 H
T028099	C 748-8-4	7/8" - 14 H	9/16" - 18 H
T000462	C 748-8-5	7/8" - 14 H	5/8" - 18 H
T000465	C 748-8-6	7/8" - 14 H	3/4" - 16 H
T000469	C 748-8-8	7/8" - 14 H	7/8" - 14 H
T000472	C 748-8-10	7/8" - 14 H	1"1/16 - 12 H
T027358	C 748-8-10 PR 2,00 MM	7/8" - 14 H	1"1/16 - 12 H
T000476	C 748-8-12	7/8" - 14 H	1"3/16 - 12 H
T023611	C 748-8-16	7/8" - 14 H	1"7/8 - 12 H
T000466	C 748-10-6	1"1/16 - 12 H	3/4" - 16 H
T000470	C 748-10-8	1"1/16 - 12 H	7/8" - 14 H
T000473	C 748-10-10	1"1/16 - 12 H	1"1/16 - 12 H
T027357	C 748-10-10 PR 2,00 MM	1"1/16 - 12 H	1"1/16 - 12 H
T000477	C 748-10-12	1"1/16 - 12 H	1"3/16 - 12 H
T018078	C 748-10-14	1"1/16 - 12 H	1"5/16 - 12 H
T027459	C 748-10-16	1"1/16 - 12 H	1"7/16 - 12 H
T029052	C 748-12-6	1"3/16 - 12 H	3/4" - 16 H
T000471	C 748-12-8	1"3/16 - 12 H	7/8" - 14 H
T000474	C 748-12-10	1"3/16 - 12 H	1"1/16 - 12 H
T000478	C 748-12-12	1"3/16 - 12 H	1"3/16 - 12 H
T000480	C 748-12-14	1"3/16 - 12 H	1"5/16 - 12 H
T025007	C 748-14-8	1"5/16 - 12 H	7/8" - 14 H
T000475	C 748-14-10	1"5/16 - 12 H	1"1/16 - 12 H
T000479	C 748-14-12	1"5/16 - 12 H	1"3/16 - 12 H
T000481	C 748-14-14	1"5/16 - 12 H	1"5/16 - 12 H
T015004	C 748-14-16	1"5/16 - 12 H	1"5/8 - 12 H
T025288	C 748-14-20	1"5/16 - 12 H	1"7/8 - 12 H
T022055	C 748-16-10	1"5/8 - 12 H	1"1/16 - 12 H
T021314	C 748-16-16	1"5/8 - 12 H	1"5/8 - 12 H
T021275	C 748-16-20	1"5/8 - 12 H	1"7/8 - 12 H
T033011	C 748-20-14	1"7/8 - 12 H	1"5/16 - 12 H

748 ADAPTADOR ASIENTO JIC 37° R. "UNF" Y ASIENTO AROSELLO R. "UNF"

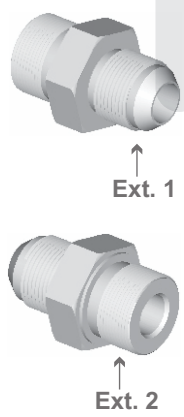
Código Cañiflex	CÓDIGO	Rosca Extremo 1 UNF Ext.	Rosca Extremo 2 UNF Ext.
T027941	C 748-20-16	1"7/8 - 12 H	1"5/8 - 12 H
T027872	C 748-20-20	1"7/8 - 12 H	1"7/8 - 12 H
T025335	C 748-20-24	1"7/8 - 12 H	2"1/2 - 12 H

748-M ADAPTADOR ASIENTO JIC 37° R. "UNF" Y ASIENTO AROSELLO R. "MÉTRICA"



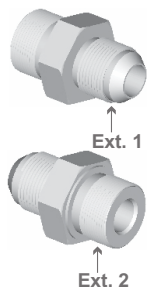
Código Cañiflex	CÓDIGO	Rosca Extremo 1 UNF Ext.	Rosca Extremo 2 Métrica Ext.
T030349	C 748-4-M12	9/16" - 18 H	12 X 1,5 MM
T026660	C 748-4-M14	9/16" - 18 H	14 X 1,5 MM
T026661	C 748-4-M16	9/16" - 18 H	16 X 1,5 MM
T027568	C 748-4-M18	9/16" - 18 H	18 X 1,5 MM
T029939	C 748-6-M14	3/4" - 16 H	14 X 1,5 MM
T026662	C 748-6-M16	3/4" - 16 H	16 X 1,5 MM
T026405	C 748-6-M18	3/4" - 16 H	18 X 1,5 MM
T026663	C 748-6-M20	3/4" - 16 H	20 X 1,5 MM
T025633	C 748-6-M22	3/4" - 16 H	22 X 1,5 MM
T026664	C 748-8-M16	7/8" - 14 H	16 X 1,5 MM
T026404	C 748-8-M18	7/8" - 14 H	18 X 1,5 MM
T026665	C 748-8-M20	7/8" - 14 H	20 X 1,5 MM
T023755	C 748-10-M18	1"1/16 - 12 H	18 X 1,5 MM
T026334	C 748-10-M22	1"1/16 - 12 H	22 X 1,5 MM

748-M ADAPTADOR ASIENTO JIC 37° R. "MÉTRICA" Y AROSELLO R. "UNF"



Código Cañiflex	CÓDIGO	Rosca Extremo 1 Métrica Ext.	Rosca Extremo 2 UNF Ext.
T000482	C 748-M14-4	14 X 1,5 MM	9/16" - 18 H
T000483	C 748-M16-4	16 X 1,5 MM	9/16" - 18 H
T000484	C 748-M16-6	16 X 1,5 MM	3/4" - 16 H
T000488	C 748-M16-8	16 X 1,5 MM	7/8" - 14 H
T000485	C 748-M18-6	18 X 1,5 MM	3/4" - 16 H
T000489	C 748-M18-8	18 X 1,5 MM	7/8" - 14 H
T000486	C 748-M20-6	20 X 1,5 MM	3/4" - 16 H
T000490	C 748-M20-8	20 X 1,5 MM	7/8" - 14 H
T000487	C 748-M22-6	22 X 1,5 MM	3/4" - 16 H
T000491	C 748-M22-8	22 X 1,5 MM	7/8" - 14 H

748-B



ADAPTADOR ASIENTO JIC 37° R. "UNF" Y ASIENTO AROSELLO R. "BSP"

Código Cañiflex	CÓDIGO	Rosca Extremo 1 UNF Ext.	Rosca Extremo 2 BSP Ext.
T023614	C 748-6-B4	3/4" - 16 H	1/4" - 19 H
T024553	C 748-6-B6	3/4" - 16 H	3/8" - 19 H
T022440	C 748-6-B8	3/4" - 16 H	1/2" - 14 H
T025294	C 748-8-B12	7/8" - 14 H	3/4" - 14 H
T024555	C 748-10-B12	1"1/16 - 12 H	3/4" - 14 H

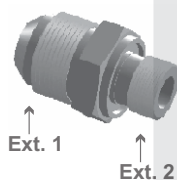
748-L

ADAPTADOR ASIENTO JIC 37° R. "UNF" Y ASIENTO AROSELLO R. "UNF" LARGO

Código Cañiflex	CÓDIGO	Rosca Extremo 1 UNF Ext.	Rosca Extremo 2 UNF Ext.
T025330	C L 748-4-6	9/16" - 18 H	9/16" - 18 H
T022722	C L 748-8-8	7/8" - 14 H	7/8" - 14 H
T023041	C L 748-10-8	1"1/16 - 12 H	7/8" - 14 H
T021822	C L 748-10-12	1"1/16 - 12 H	1"3/16 - 12 H
T024019	C L 748-12-10	1"3/16 - 12 H	1"1/16 - 12 H

OP 748-M

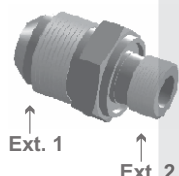
ADAPTADOR ASIENTO JIC 37° R. "UNF" Y ASIENTO AROSELLO OP R. "MÉTRICA"



Código Cañiflex	CÓDIGO	Rosca Extremo 1 UNF Ext.	Rosca Extremo 2 Métrica Ext.
T029747	C OP 748-4-M16	9/16" - 18 H	16 X 1,5 MM
T029763	C OP 748-6-M14	3/4" - 16 H	14 X 1,5 MM
T026508	C OP 748-6-M16	3/4" - 16 H	16 X 1,5 MM
T026521	C OP 748-6-M18	3/4" - 16 H	18 X 1,5 MM
T029746	C OP 748-8-M14	3/4" - 16 H	14 X 1,5 MM
T026506	C OP 748-8-M18	7/8" - 14 H	18 X 1,5 MM
T026505	C OP 748-10-M22	1"1/16 - 12 H	22 X 1,5 MM
T030013	C OP 748-10-M26	1"1/16 - 12 H	26 X 1,5 MM

OP 748

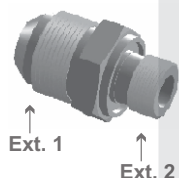
ADAPTADOR ASIENTO JIC 37° R. "UNF" Y ASIENTO AROSELLO OP R. "UNF"



Código Cañiflex	CÓDIGO	Rosca Extremo 1 UNF Ext.	Rosca Extremo 2 UNF Ext.
T045463	C OP 748-4-3	9/16" - 18 H	1/2" - 20 H
T055874	C OP 748-4-4	9/16" - 18 H	9/16" - 18 H
T029764	C OP 748-6-6	3/4" - 16 H	3/4" - 16 H
T030523	C OP 748-8-6	7/8" - 14 H	3/4" - 16 H
T029515	C OP 748-10-10	1"1/16 - 12 H	1"1/16 - 12 H

OP 748-B

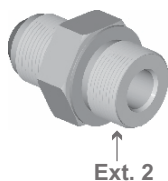
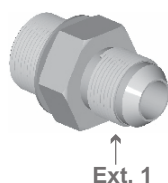
ADAPTADOR ASIENTO JIC 37° R. "UNF" Y ASIENTO AROSELLO OP R. "BSP"



Código Cañiflex	CÓDIGO	Rosca Extremo 1 UNF Ext.	Rosca Extremo 2 BSP Ext.
T030125	C OP 748-3-B4	1/2" - 20 H	1/4" - 19 H
T026827	C OP 748-4-B4	9/16" - 18 H	1/4" - 19 H
T025053	C OP 748-4-B6	9/16" - 18 H	3/8" - 19 H
T045605	C OP 748-4-B6 PR 1,25 MM	9/16" - 18 H	3/8" - 19 H
T029511	C OP 748-4-B8	9/16" - 18 H	1/2" - 14 H
T026432	C OP 748-5-B8	5/8" - 18 H	1/2" - 14 H
T025054	C OP 748-6-B4	3/4" - 16 H	1/4" - 19 H
T026859	C OP 748-6-B6	3/4" - 16 H	3/8" - 19 H
T025055	C OP 748-6-B8	3/4" - 16 H	1/2" - 14 H
T026429	C OP 748-6-B16	3/4" - 16 H	1" - 11 H
T034150	C OP 748-8-B6	7/8" - 14 H	3/8" - 19 H
T025057	C OP 748-8-B8	7/8" - 14 H	1/2" - 14 H
T026861	C OP 748-8-B12	7/8" - 14 H	3/4" - 14 H
T044192	C OP 748-10-B6	1"1/16 - 12 H	3/8" - 19 H
T030662	C OP 748-10-B8	1"1/16 - 12 H	1/2" - 14 H
T026862	C OP 748-10-B12	1"1/16 - 12 H	3/4" - 14 H
T025056	C OP 748-10-B16	1"1/16 - 12 H	1" - 11 H
T038280	C OP 748-12-B8	1"3/16 - 12 H	1/2" - 14 H
T026302	C OP 748-12-B12	1"3/16 - 12 H	3/4" - 14 H
T029853	C OP 748-14-B16	1"5/16 - 12 H	1" - 11 H
T028882	C OP 748-14-B20	1"5/16 - 12 H	1"1/4 - 11 H
T030564	C OP 748-16-B20	1"5/8 - 12 H	1"1/4 - 11 H
T056853	C OP 748-16-B24	1"5/8 - 12 H	1"1/2 - 11 H
T030249	C OP 748-20-B32	1"7/8 - 12 H	2" - 11 H

749

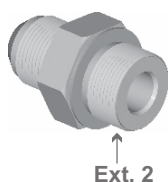
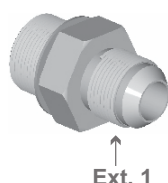
ADAPTADOR ASIENTO JIC 37° R. "UNF" Y ASIENTO ARANDELA R. "UNF"



Código Cañiflex	CÓDIGO	Rosca Extremo 1 UNF Ext.	Rosca Extremo 2 UNF Ext.
T025413	C 749-4-1	9/16" - 18 H	3/8" - 24 H
T026610	C 749-4-4	9/16" - 18 H	9/16" - 18 H
T026611	C 749-6-4	3/4" - 16 H	9/16" - 18 H
T026612	C 749-6-6	3/4" - 16 H	3/4" - 16 H
T026613	C 749-6-8	3/4" - 16 H	7/8" - 14 H
T026614	C 749-8-8	7/8" - 14 H	7/8" - 14 H
T026615	C 749-10-8	1"1/16 - 12 H	7/8" - 14 H
T026616	C 749-10-10	1"1/16 - 12 H	1"1/16 - 12 H
T026617	C 749-12-12	1"3/16 - 12 H	1"3/16 - 12 H
T026618	C 749-14-14	1"5/16 - 12 H	1"5/16 - 12 H
T026619	C 749-15-14	1"7/16 - 12 H	1"5/16 - 12 H
T026620	C 749-16-16	1"5/8 - 12 H	1"5/8 - 12 H
T026621	C 749-20-20	1"7/8 - 12 H	1"7/8 - 12 H
T026622	C 749-24-24	2"1/2 - 12 H	2"1/2 - 12 H

749-B

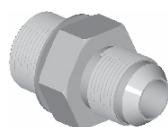
ADAPTADOR ASIENTO JIC 37° R. "UNF" Y ASIENTO ARANDELA R. "BSP"



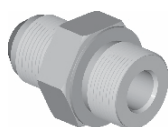
Código Cañiflex	CÓDIGO	Rosca Extremo 1 UNF Ext.	Rosca Extremo 2 BSP Ext.
T026598	C 749-4-B4	9/16" - 18 H	1/4" - 19 H
T026599	C 749-4-B6	9/16" - 18 H	3/8" - 19 H
T026600	C 749-6-B4	3/4" - 16 H	1/4" - 19 H
T026601	C 749-6-B6	3/4" - 16 H	3/8" - 19 H
T026602	C 749-6-B8	3/4" - 16 H	1/2" - 14 H
T026613	C 749-6-B12	3/4" - 16 H	3/4" - 14 H
T026603	C 749-6-B16	3/4" - 16 H	1" - 11 H
T026604	C 749-8-B8	7/8" - 14 H	1/2" - 14 H
T025664	C 749-8-B12	7/8" - 14 H	3/4" - 14 H
T029590	C 749-10-B8	1"1/16 - 12 H	1/2" - 14 H
T022948	C 749-10-B12	1"1/16 - 12 H	3/4" - 14 H
T026605	C 749-12-B12	1"3/16 - 12 H	3/4" - 14 H
T028730	C 749-14-B12	1"5/16 - 12 H	3/4" - 14 H
T026606	C 749-14-B16	1"5/16 - 12 H	1" - 11 H
T028575	C 749-14-B20	1"5/16 - 12 H	1"1/4 - 11 H
T028576	C 749-16-B12	1"5/8 - 12 H	3/4" - 14 H
T028577	C 749-16-B16	1"5/8 - 12 H	1" - 11 H
T026507	C 749-16-B20	1"5/8 - 12 H	1"1/4 - 11 H
T039197	C 749-20-B16	1"7/8 - 12 H	1" - 11 H
T026608	C 749-20-B20	1"7/8 - 12 H	1"1/4 - 11 H
T026609	C 749-20-B24	1"7/8 - 12 H	1"1/2 - 11 H
T032212	C 749-24-B20	2"1/2 - 12 H	1"1/4 - 11 H

749-M

ADAPTADOR ASIENTO JIC 37° R. "UNF" Y ASIENTO ARANDELA R. "MÉTRICA"



Ext. 1



Ext. 2

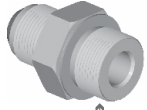
Código Cañiflex	CÓDIGO	Rosca Extremo 1 UNF Ext.	Rosca Extremo 2 Métrica Ext.
T045678	C 749-4-M10	9/16" - 18 H	10 X 1,5 MM
T032825	C 749-4-M12	9/16" - 18 H	12 X 1,5 MM
T000492	C 749-4-M14	9/16" - 18 H	14 X 1,5 MM
T000493	C 749-4-M16	9/16" - 18 H	16 X 1,5 MM
T020568	C 749-4-M18	9/16" - 18 H	18 X 1,5 MM
T031719	C 749-6-M14	3/4" - 16 H	14 X 1,5 MM
T000494	C 749-6-M16	3/4" - 16 H	16 X 1,5 MM
T000495	C 749-6-M18	3/4" - 16 H	18 X 1,5 MM
T000496	C 749-6-M20	3/4" - 16 H	20 X 1,5 MM
T000497	C 749-6-M22	3/4" - 16 H	22 X 1,5 MM
T000498	C 749-8-M16	7/8" - 14 H	16 X 1,5 MM
T000499	C 749-8-M18	7/8" - 14 H	18 X 1,5 MM
T000500	C 749-8-M20	7/8" - 14 H	20 X 1,5 MM
T000501	C 749-8-M22	7/8" - 14 H	22 X 1,5 MM
T029203	C 749-8-M24	7/8" - 14 H	24 X 1,5 MM
T029204	C 749-8-M26	7/8" - 14 H	26 X 1,5 MM
T027458	C 749-10-M18	1"1/16 - 12 H	18 X 1,5 MM
T023501	C 749-10-M22	1"1/16 - 12 H	22 X 1,5 MM
T026749	C 749-10-M26	1"1/16 - 12 H	26 X 1,5 MM
T023502	C 749-10-M27	1"1/16 - 12 H	27 X 1,5 MM

749-M-M

ADAPTADOR ASIENTO JIC 37° R. "MÉTRICA" Y ASIENTO ARANDELA R. "MÉTRICA"



Ext. 1

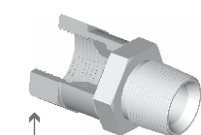


Ext. 2

Código Cañiflex	CÓDIGO	Rosca Extremo 1 Métrica Ext.	Rosca Extremo 2 Métrica Ext.
T000502	C 749-M14-M14	14 X 1,5 MM	14 X 1,5 MM
T000503	C 749-M16-M16	16 X 1,5 MM	16 X 1,5 MM
T000504	C 749-M18-M18	18 X 1,5 MM	18 X 1,5 MM
T000505	C 749-M20-M20	20 X 1,5 MM	20 X 1,5 MM
T000506	C 749-M22-M22	22 X 1,5 MM	22 X 1,5 MM

751-B

ADAPTADOR H. GIRATORIA ASIENTO JIC 37° R. "UNF" Y R. CÓNICA "BSPT"



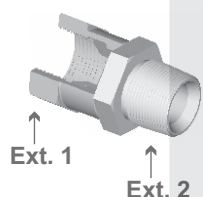
Ext. 1

Ext. 2

Código Cañiflex	CÓDIGO	Rosca Extremo 1 UNF Int.	Rosca Extremo 2 BSPT Ext.
T027970	C 751-6-B8	3/4" - 16 H	1/2" - 14 H
T030832	C 751-10-B12	1"1/16 - 12 H	3/4" - 14 H
T028644	C 751-16-B20	1"5/8 - 12 H	1"1/4 - 11 H

751

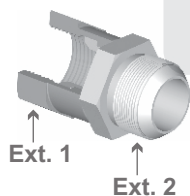
ADAPTADOR H. GIRATORIA ASIENTO JIC 37° R. "UNF" Y R. CÓNICA "NPT"



Código Cañiflex	CÓDIGO	Rosca Extremo 1 UNF Int.	Rosca Extremo 2 Cónica NPT Ext.
T026577	C 751-2-4	7/16" - 20 H	1/4" - 18 H
T000507	C 751-4-4	9/16" - 18 H	1/4" - 18 H
T000508	C 751-4-6	9/16" - 18 H	3/8" - 18 H
T028483	C 751-4-8	9/16" - 18 H	1/2" - 14 H
T018249	C 751-6-4	3/4" - 16 H	1/4" - 18 H
T000509	C 751-6-6	3/4" - 16 H	3/8" - 18 H
T000511	C 751-6-8	3/4" - 16 H	1/2" - 14 H
T000510	C 751-8-6	7/8" - 14 H	3/8" - 18 H
T000512	C 751-8-8	7/8" - 14 H	1/2" - 14 H
T021427	C 751-8-12	7/8" - 14 H	3/4" - 14 H
T000513	C 751-10-8	1"1/16 - 12 H	1/2" - 14 H
T000514	C 751-10-12	1"1/16 - 12 H	3/4" - 14 H
T027678	C 751-10-16	1"1/16 - 12 H	1" - 11 1/2 H
T021801	C 751-12-12	1"3/16 - 12 H	3/4" - 14 H
T027163	C 751-12-16	1"3/16 - 12 H	1" - 11 1/2 H
T019386	C 751-14-12	1"5/16 - 12 H	3/4" - 14 H
T020917	C 751-14-16	1"5/16 - 12 H	1" - 11 1/2 H
T029122	C 751-16-16	1"5/8 - 12 H	1" - 11 1/2 H
T026947	C 751-16-20	1"5/8 - 12 H	1"1/4 - 11 1/2 H
T031560	C 751-20-24	1"7/8 - 12 H	1"1/2 - 11 1/2 H

754

ADAPTADOR H. GIRATORIA ASIENTO JIC 37° R. "UNF" Y ASIENTO JIC 37° R. "UNF"



Código Cañiflex	CÓDIGO	Rosca Extremo 1 UNF Int.	Rosca Extremo 2 UNF Ext.
T028471	C 754-2-2	7/16" - 20 H	9/16" - 18 H
T028472	C 754-2-4	7/16" - 20 H	9/16" - 18 H
T000515	C 754-4-4	9/16" - 18 H	9/16" - 18 H
T000516	C 754-4-4 PR 1,00 MM	9/16" - 18 H	9/16" - 18 H
T028477	C 754-4-6	9/16" - 18 H	3/4" - 16 H
T025266	C 754-6-4	3/4" - 16 H	9/16" - 18 H
T000517	C 754-6-6	3/4" - 16 H	3/4" - 16 H
T000518	C 754-6-6 PR 1,00 MM	3/4" - 16 H	3/4" - 16 H
T028476	C 754-6-8	3/4" - 16 H	7/8" - 14 H
T028473	C 754-6-14	3/4" - 16 H	1"5/16 - 12 H
T024982	C 754-8-4	7/8" - 14 H	9/16" - 18 H
T028905	C 754-8-6	7/8" - 14 H	3/4" - 16 H
T000519	C 754-8-8	7/8" - 14 H	7/8" - 14 H
T034149	C 754-8-10	7/8" - 14 H	1"1/16 - 12 H
T027922	C 754-10-8	1"1/16 - 12 H	7/8" - 14 H
T025396	C 754-10-10	1"1/16 - 12 H	1"1/16 - 12 H
T031788	C 754-10-14	1"1/16 - 12 H	1"5/16 - 12 H
T031790	C 754-10-20	1"1/16 - 12 H	1"7/8 - 12 H
T032377	C 754-12-8	1"3/16 - 12 H	7/8" - 14 H
T031078	C 754-12-14	1"3/16 - 12 H	1"5/16 - 12 H
T028474	C 754-14-6	1"5/16 - 12 H	3/4" - 16 H
T031789	C 754-14-10	1"5/16 - 12 H	1"1/16 - 12 H
T030755	C 754-14-12	1"5/16 - 12 H	1"3/16 - 12 H
T033241	C 754-14-14	1"5/16 - 12 H	1"5/16 - 12 H
T021754	C 754-14-16	1"5/16 - 12 H	1"5/8 - 12 H

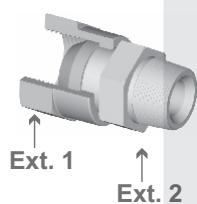
758

ADAPTADOR H. GIRATORIA ASIENTO JIC 37° R. "UNF" Y ASIENTO AROSELLO R. "UNF"

Código Cañiflex	CÓDIGO	Rosca Extremo 1 UNF Int.	Rosca Extremo 2 UNF Ext.
T029111	C 758-4-4	9/16" - 18 H	9/16" - 18 H
T027165	C 758-8-8	7/8" - 14 H	7/8" - 14 H
T045284	C 758-10-8	1"1/16 - 12 H	7/8" - 14 H
T032402	C 758-10-10	1"1/16 - 12 H	1"1/16 - 12 H

771

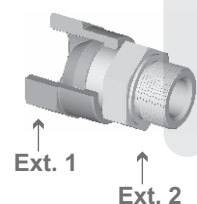
ADAPTADOR H. GIRATORIA ASIENTO SAE 30° R. "NPS" Y ASIENTO CÓNICO R. "NPT"



Código Cañiflex	CÓDIGO	Rosca Extremo 1 NPS Int.	Rosca Extremo 2 NPT Ext.
T020329	C 771-2-2	1/8" - 27 H	1/8" - 27 H
T000520	C 771-4-4	1/4" - 18 H	1/4" - 18 H
T000521	C 771-4-6	1/4" - 18 H	3/8" - 18 H
T000522	C 771-6-4	3/8" - 18 H	1/4" - 18 H
T000523	C 771-6-6	3/8" - 18 H	3/8" - 18 H
T000524	C 771-6-8	3/8" - 18 H	1/2" - 14 H
T000525	C 771-8-6	1/2" - 14 H	3/8" - 18 H
T000526	C 771-8-8	1/2" - 14 H	1/2" - 14 H
T000527	C 771-8-12	1/2" - 14 H	3/4" - 14 H
T000528	C 771-12-8	3/4" - 14 H	1/2" - 14 H
T000529	C 771-12-12	3/4" - 14 H	3/4" - 14 H
T021279	C 771-16-16	1" - 11 1/2 H	1" - 11 1/2 H

778

ADAPTADOR H. GIRATORIA ASIENTO SAE 30° R. "NPS" Y ASIENTO AROSELLO R. "UNF"



Código Cañiflex	CÓDIGO	Rosca Extremo 1 NPS Int.	Rosca Extremo 2 UNF Ext.
T000530	C 778-4-4	1/4" - 18 H	9/16" - 18 H
T000532	C 778-4-6	1/4" - 18 H	3/4" - 16 H
T000531	C 778-6-4	3/8" - 18 H	9/16" - 18 H
T000533	C 778-6-6	3/8" - 18 H	3/4" - 16 H
T000535	C 778-6-8	3/8" - 18 H	7/8" - 14 H
T000534	C 778-8-6	1/2" - 14 H	3/4" - 16 H
T000536	C 778-8-8	1/2" - 14 H	7/8" - 14 H
T000537	C 778-8-10	1/2" - 14 H	1"1/16 - 12 H
T025251	C 778-10-10	5/8" - 14 H	1"1/16 - 12 H

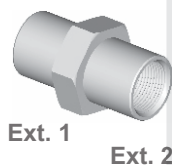
781

ADAPTADOR ASIENTO AROSELLO R. "UNF" INTERIOR Y R. CÓNICA "NPT"

Código Cañiflex	CÓDIGO	Rosca Extremo 1 UNF Int.	Rosca Extremo 2 Cónica NPT Ext.
T043393	C 781-2I-4	7/16" - 20 H	1/4" - 18 H
T000538	C 781-4I-4	9/16" - 18 H	1/4" - 18 H
T000539	C 781-4I-6	9/16" - 18 H	3/8" - 18 H
T019433	C 781-4I-8	9/16" - 18 H	1/2" - 14 H
T000540	C 781-6I-6	3/4" - 16 H	3/8" - 18 H
T000541	C 781-6I-8	3/4" - 16 H	1/2" - 14 H
T000542	C 781-8I-8	7/8" - 14 H	1/2" - 14 H
T000543	C 781-10I-12	1"1/16" - 12 H	3/4" - 14 H
T000544	C 781-12I-12	1"3/16" - 12 H	3/4" - 14 H

781

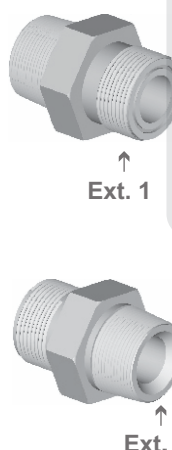
ADAPTADOR ASIENTO AROSELLO R. "UNF" INTERIOR Y R. CÓNICA "NPT" INTERIOR



Código Cañiflex	CÓDIGO	Rosca Extremo 1 UNF Int.	Rosca Extremo 2 Cónica NPT Ext.
T000546	C 781-6I-6I	3/4" - 16 H	3/8" - 18 H
T000547	C 781-6I-8I	3/4" - 16 H	1/2" - 14 H
T000545	C 781-8I-4I	7/8" - 14 H	1/4" - 18 H
T000548	C 781-8I-8I	7/8" - 14 H	1/2" - 14 H

AF-781

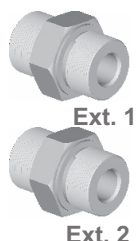
ADAPTADOR ASIENTO AROSELLO "FRONTAL" ORFS R. "UNF" Y R. CÓNICA "NPT"



Código Cañiflex	CÓDIGO	Rosca Extremo 1 UNF Ext.	Rosca Extremo 2 Cónica NPT Ext.
T000549	C AF 781-4-2	9/16" - 18 H	1/8" - 27 H
T000550	C AF 781-4-4	9/16" - 18 H	1/4" - 18 H
T000551	C AF 781-4-6	9/16" - 18 H	3/8" - 18 H
T000552	C AF 781-5-4	11/16" - 16 H	1/4" - 18 H
T000553	C AF 781-5-6	11/16" - 16 H	3/8" - 18 H
T000554	C AF 781-5-8	11/16" - 16 H	1/2" - 14 H
T000555	C AF 781-7-6	13/16" - 16 H	3/8" - 18 H
T000556	C AF 781-7-8	13/16" - 16 H	1/2" - 14 H
T000557	C AF 781-9-8	1" - 14 H	1/2" - 14 H
T030291	C AF 781-9-12	1" - 14 H	3/4" - 14 H
T048457	C AF 781-9-16	1" - 14 H	1" - 11 1/2 H
T038755	C AF 781-12-8	1"3/16" - 12 H	1/2" - 14 H
T000558	C AF 781-12-12	1"3/16" - 12 H	3/4" - 14 H
T030657	C AF 781-12-16	1"3/16" - 12 H	1" - 11 1/2 H
T030126	C AF 781-15-12	1"7/16" - 12 H	3/4" - 14 H
T029003	C AF 781-15-16	1"7/16" - 12 H	1" - 11 1/2 H
T029004	C AF 781-15-20	1"7/16" - 12 H	1"1/4 - 11 1/2 H
T039038	C AF 781-15-24	1"7/16" - 12 H	1"1/2 - 11 1/2 H
T027944	C AF 781-17-20	1"11/16" - 12 H	1"1/4 - 11 1/2 H

788

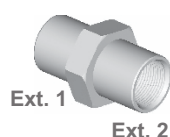
ADAPTADOR ASIENTO AROSELLO R. "UNF" EN AMBOS EXTREMOS



Código Cañiflex	CÓDIGO	Rosca Extremo 1 UNF Ext.	Rosca Extremo 2 UNF Ext.
T000559	C 788-4-4	9/16" - 18 H	9/16" - 18 H
T000560	C 788-6-6	3/4" - 16 H	3/4" - 16 H
T000561	C 788-8-8	7/8" - 14 H	7/8" - 14 H
T030314	C 788-12-10	1"3/16" - 12 H	1"1/16" - 12 H

788

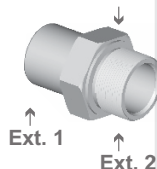
ADAPTADOR ASIENTO AROSELLO R. "UNF" INTERNO EN AMBOS EXTREMOS



Código Cañiflex	CÓDIGO	Rosca Extremo 1 UNF Int.	Rosca Extremo 2 UNF Int.
T000562	C 788-4I-4I	9/16" - 18 H	9/16" - 18 H
T000563	C 788-6I-6I	3/4" - 16 H	3/4" - 16 H
T000564	C 788-8I-8I	7/8" - 14 H	7/8" - 14 H

788

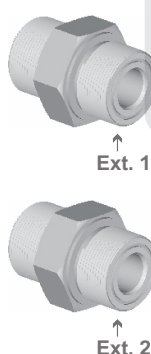
ADAPTADOR ASIENTO AROSELLO R. "UNF" INTERNO Y ASIENTO AROSELLO R. "UNF"



Código Cañiflex	CÓDIGO	Rosca Extremo 1 UNF Int.	Rosca Extremo 2 UNF Ext.
T000565	C 788-4I-4	9/16" - 18 H	9/16" - 18 H
T000566	C 788-6I-6	3/4" - 16 H	3/4" - 16 H
T024696	C 788-6I-8	3/4" - 16 H	7/8" - 14 H
T028414	C 788-8I-6	7/8" - 14 H	3/4" - 16 H
T000567	C 788-8I-8	7/8" - 14 H	7/8" - 14 H

788-AF-AF

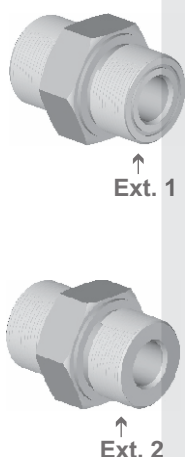
ADAPTADOR AROSELLO FRONTAL ORFS R. "UNF" EN AMBOS EXTREMOS



Código Cañiflex	CÓDIGO	Rosca Extremo 1 UNF Ext.	Rosca Extremo 2 UNF Ext.
T026642	C 788-AF4-AF4	9/16" - 18 H	9/16" - 18 H
T026426	C 788-AF5-AF5	11/16" - 16 H	11/16" - 16 H
T049528	C 788-AF5-AF9	11/16" - 16 H	1" - 14 H
T026643	C 788-AF7-AF7	13/16" - 16 H	13/16" - 16 H
T026425	C 788-AF8-AF8	7/8" - 14 H	7/8" - 14 H
T026644	C 788-AF9-AF9	1" - 14 H	1" - 14 H

AF-788

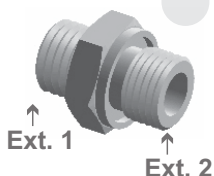
ADAPTADOR AROSELLO "FRONTAL" ORFS R. "UNF" Y ASIENTO AROSELLO R. "UNF"



Código Cañiflex	CÓDIGO	Rosca Extremo 1 UNF Ext.	Rosca Extremo 2 UNF Ext.
T000568	C AF 788-4-2	9/16" - 18 H	7/16" - 20 H
T000569	C AF 788-4-4	9/16" - 18 H	9/16" - 18 H
T000570	C AF 788-4-6	9/16" - 18 H	3/4" - 16 H
T044855	C AF 788-4-8	9/16" - 18 H	7/8" - 14 H
T000571	C AF 788-5-4	11/16" - 16 H	9/16" - 18 H
T026826	C AF 788-5-5	11/16" - 16 H	11/16" - 16 H
T000572	C AF 788-5-6	11/16" - 16 H	3/4" - 16 H
T000573	C AF 788-5-8	11/16" - 16 H	7/8" - 14 H
T000574	C AF 788-7-4	13/16" - 16 H	9/16" - 18 H
T000575	C AF 788-7-6	13/16" - 16 H	3/4" - 16 H
T033774	C AF 788-7-6 PR 1,50 MM	13/16" - 16 H	3/4" - 16 H
T000576	C AF 788-7-8	13/16" - 16 H	7/8" - 14 H
T000577	C AF 788-7-10	13/16" - 16 H	1"1/16" - 12 H
T026825	C AF 788-8-8	7/8" - 14 H	7/8" - 14 H
T035700	C AF 788-9-6	1" - 14 H	3/4" - 16 H
T000578	C AF 788-9-8	1" - 14 H	7/8" - 14 H
T035968	C AF 788-9-10	1" - 14 H	1"1/16" - 12 H
T028936	C AF 788-12-8	1"3/16" - 12 H	7/8" - 14 H
T000579	C AF 788-12-10	1"3/16" - 12 H	1"1/16" - 12 H
T000580	C AF 788-12-12	1"3/16" - 12 H	1"3/16" - 12 H
T000581	C AF 788-12-14	1"3/16" - 12 H	1"5/16" - 12 H
T027945	C AF 788-15-6	1"7/16" - 12 H	3/4" - 16 H
T000583	C AF 788-15-14	1"7/16" - 12 H	1"5/16" - 12 H
T028488	C AF 788-15-15	1"7/16" - 12 H	1"7/16" - 12 H
T033359	C AF 788-17-16	1"11/16" - 12 H	1"5/8" - 12 H

OP 788

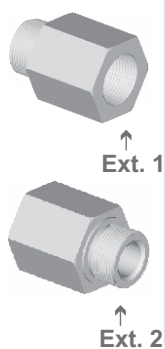
ADAPTADOR AROSELLO FRONTAL ORFS R. "UNF" Y AROSELLO PLANO R. "BPS"



Código Cañiflex	CÓDIGO	Rosca Extremo 1 UNF Ext.	Rosca Extremo 2 BSP Ext.
T026651	C OP 788-AF4-B4	9/16" - 18 H	1/4" - 19 H
T026652	C OP 788-AF4-B6	9/16" - 18 H	3/8" - 19 H
T038745	C OP 788-AF4-B8	9/16" - 18 H	1/2" - 14 H
T026656	C OP 788-AF5-B6	11/16" - 16 H	3/8" - 19 H
T026657	C OP 788-AF5-B8	11/16" - 16 H	1/2" - 12 H
T042604	C OP 788-AF5-B4	11/16" - 16 H	1/4" - 19 H
T036573	C OP 788-AF7-B6	13/16" - 16 H	3/8" - 19 H
T026417	C OP 788-AF7-B8	13/16" - 16 H	1/2" - 12 H
T038811	C OP 788-AF7-B12	13/16" - 16 H	3/4" - 14 H
T048152	C OP 788-AF9-B6	1" - 14 H	3/8" - 19 H
T029130	C OP 788-AF9-B8	1" - 14 H	1/2" - 12 H
T026658	C OP 788-AF9-B16	1" - 14 H	1" - 11 H
T026659	C OP 788-AF9-B20	1" - 14 H	1"1/4" - 11 H
T038752	C OP 788-AF15-B8	1"7/16" - 12 H	1/2" - 12 H
T040391	C OP 788-AF17-B20	1"11/16" - 12 H	1"1/4" - 11 H

798-M

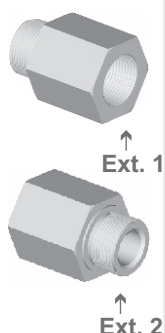
ADAPTADOR ASIENTO ARANDELA R. "MÉTRICA" INTERNO Y ASIENTO AROSELLO R. "UNF"



Código Cañiflex	CÓDIGO	Rosca Extremo 1 Métrica Int.	Rosca Extremo 2 UNF Ext.
T000584	C 798-M14I-4	14 X 1,5 MM	9/16" - 18 H
T000585	C 798-M14I-6	14 X 1,5 MM	3/4" - 16 H
T000586	C 798-M16I-6	16 X 1,5 MM	3/4" - 16 H
T000589	C 798-M16I-8	16 X 1,5 MM	7/8" - 14 H
T000587	C 798-M18I-6	18 X 1,5 MM	3/4" - 16 H
T000590	C 798-M18I-8	18 X 1,5 MM	7/8" - 14 H
T000588	C 798-M20I-6	20 X 1,5 MM	3/4" - 16 H
T000591	C 798-M20I-8	20 X 1,5 MM	7/8" - 14 H
T033414	C 798-M20I-10	20 X 1,5 MM	1"1/16 - 12 H
T024531	C 798-M22I-6	22 X 1,5 MM	3/4" - 16 H
T021731	C 798-M22I-8	22 X 1,5 MM	7/8" - 14 H

798-M-M

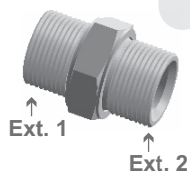
ADAPTADOR ASIENTO ARANDELA R. "MÉTRICA" INTERNO Y ASIENTO AROSELLO R. "MÉTRICA"



Código Cañiflex	CÓDIGO	Rosca Extremo 1 Métrica Int.	Rosca Extremo 2 Métrica Ext.
T023763	C 798-M14I-M14	14 X 1,5 MM	14 X 1,5 MM
T028375	C 798-M16I-M16	16 X 1,5 MM	16 X 1,5 MM
T037613	C 798-M18I-M18	18 X 1,5 MM	18 X 1,5 MM

799

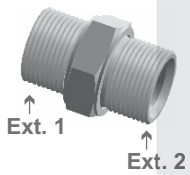
ADAPTADOR ASIENTO ARANDELA R. "NPS" EN AMBOS EXTREMOS



Código Cañiflex	CÓDIGO	Rosca Extremo 1 Cilíndrica NPS Ext.	Rosca Extremo 2 Cilíndrica NPS Ext.
T019581	C 799-4-4	1/4" - 18 H	1/4" - 18 H
T019580	C 799-6-4	3/8" - 18 H	1/4" - 18 H
T019579	C 799-6-6	3/8" - 18 H	3/8" - 18 H
T019578	C 799-8-6	1/2" - 14 H	3/8" - 18 H
T019582	C 799-12-12	3/4" - 14 H	3/4" - 14 H
T019583	C 799-16-16	1" - 11 1/2 H	1" - 11 1/2 H
T020984	C 799-20-20	1"1/4 - 11 1/2 H	1"1/4 - 11 1/2 H

799-B-B

ADAPTADOR ASIENTO ARANDELA R. "BSP" EN AMBOS EXTREMOS



Código Cañiflex	CÓDIGO	Rosca Extremo 1 BSP Ext.	Rosca Extremo 2 BSP Ext.
T021816	C 799-B2-B2	1/8" - 28 H	1/8" - 28 H
T026638	C 799-B4-B4	1/4" - 19 H	1/4" - 19 H
T026639	C 799-B6-B4	3/8" - 19 H	1/4" - 19 H
T021730	C 799-B6-B6	3/8" - 19 H	3/8" - 19 H
T027327	C 799-B8-B6	1/2" - 14 H	3/8" - 19 H
T031771	C 799-B8-B8	1/2" - 14 H	1/2" - 14 H
T021729	C 799-B8-B12	1/2" - 14 H	3/4" - 14 H
T022667	C 799-B10-B10	5/8" - 14 H	5/8" - 14 H
T021728	C 799-B12-B12	3/4" - 14 H	3/4" - 14 H
T027330	C 799-B16-B12	1" - 11 H	3/4" - 11 H
T027329	C 799-B16-B16	1" - 11 H	1" - 11 H
T021732	C 799-B24-B24	1"1/2 - 11 H	1"1/2 - 11 H
T021783	C 799-B32-B32	2" - 11 H	2" - 11 H



IATF 16949



Alcance:

Casa Central

Comercialización de terminales, accesorios, mangueras y cañerías oleohidráulicas.

Comercialización de kit de "circuitos oleohidráulicos" para fabricantes de equipos originales (OEM).

Alcance:

Planta Parque Industrial "La Victoria"

Diseño, Desarrollo y Manufactura de terminales, accesorios, ensambles de mangueras y cañerías oleohidráulicas.

Diseño, Desarrollo y Manufactura de kit de "circuitos oleohidráulicos" para fabricantes de equipos originales (OEM).

